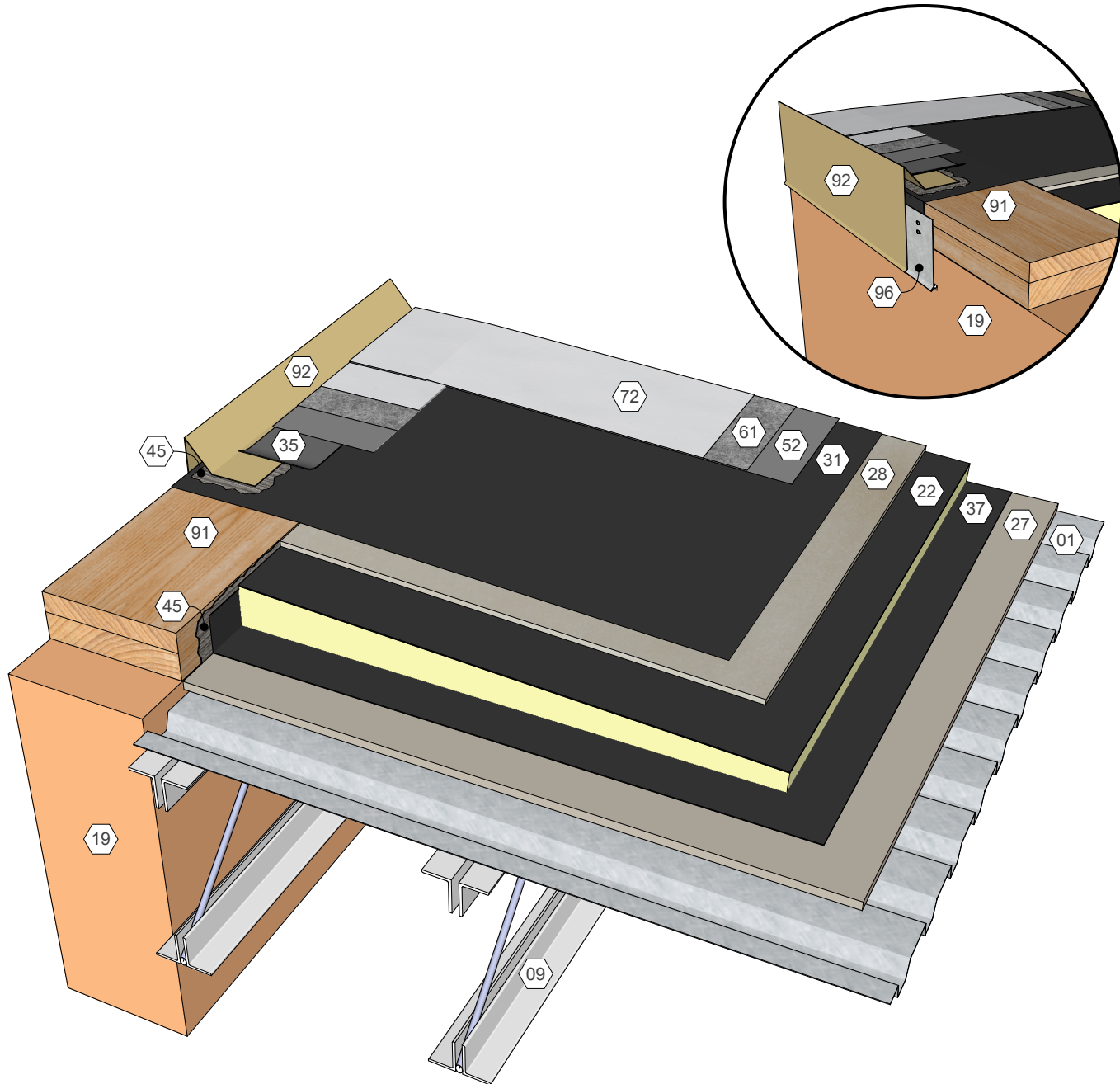


KEY NOTES

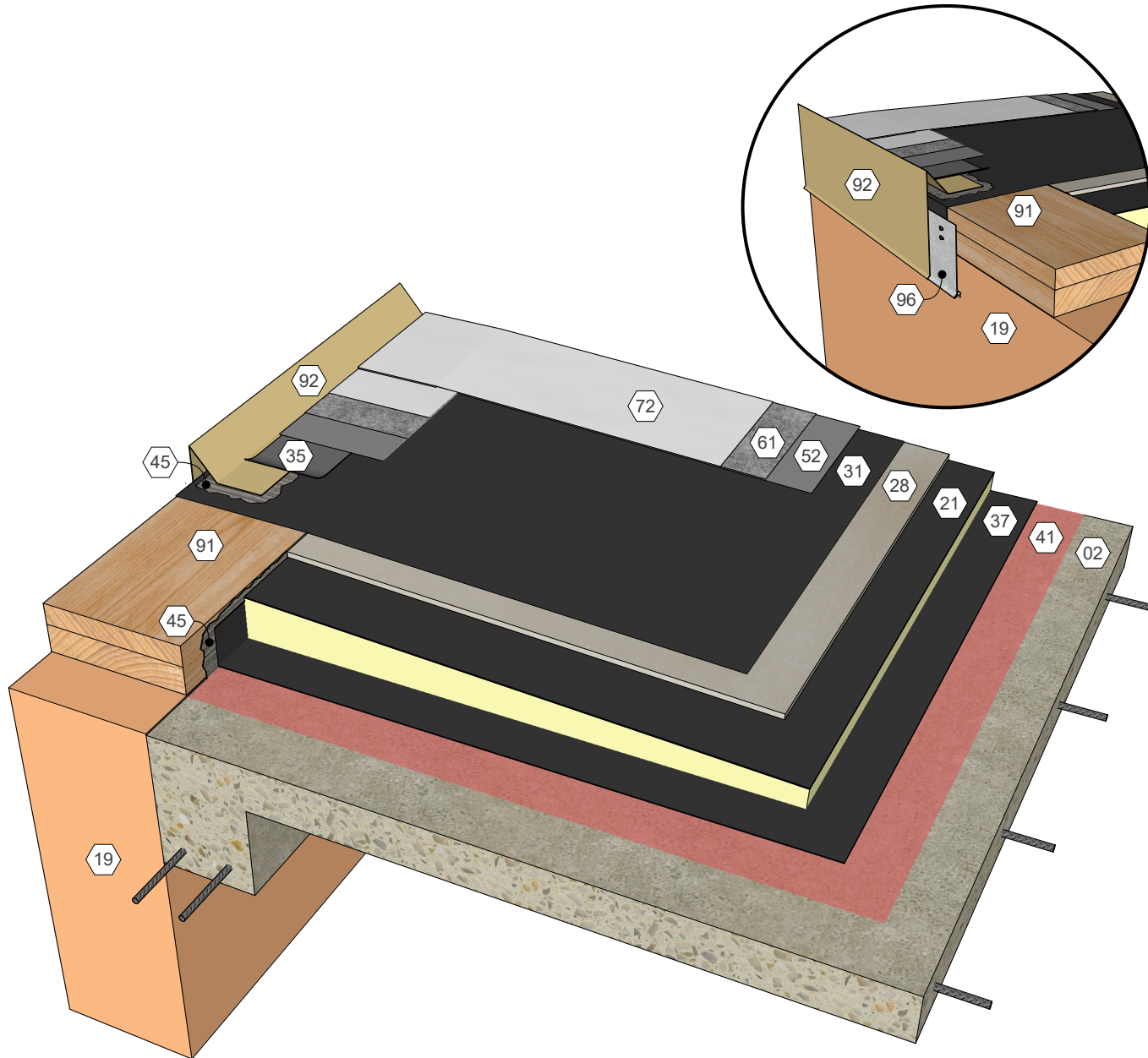
- 01 Metal Deck
- 09 Roof Structure
- 19 Wall Assembly
- 22 Polyisocyanurate Insulation (Fastened or Adhered)
- 27 Substrate Board (Fastened)
- 28 Cover Board (Adhered)
- 31 Approved Base Ply Sheet
- 35 Stripping Ply
- 37 Approved Base Sheet (Adhered)
- 45 Roofing Mastic
- 52 AlphaGuard BIO Base Coat
- 61 AlphaGuard Glass Mat or Permafab
- 72 AlphaGuard BIO Top Coat
- 91 Wood Blocking
- 92 Gravel Stop Edge
- 96 Cont. Cleat



AlphaGuard® BIO Plus Gravel Stop Edge, Temp. Roof, Metal Deck
Detail 33031

KEY NOTES

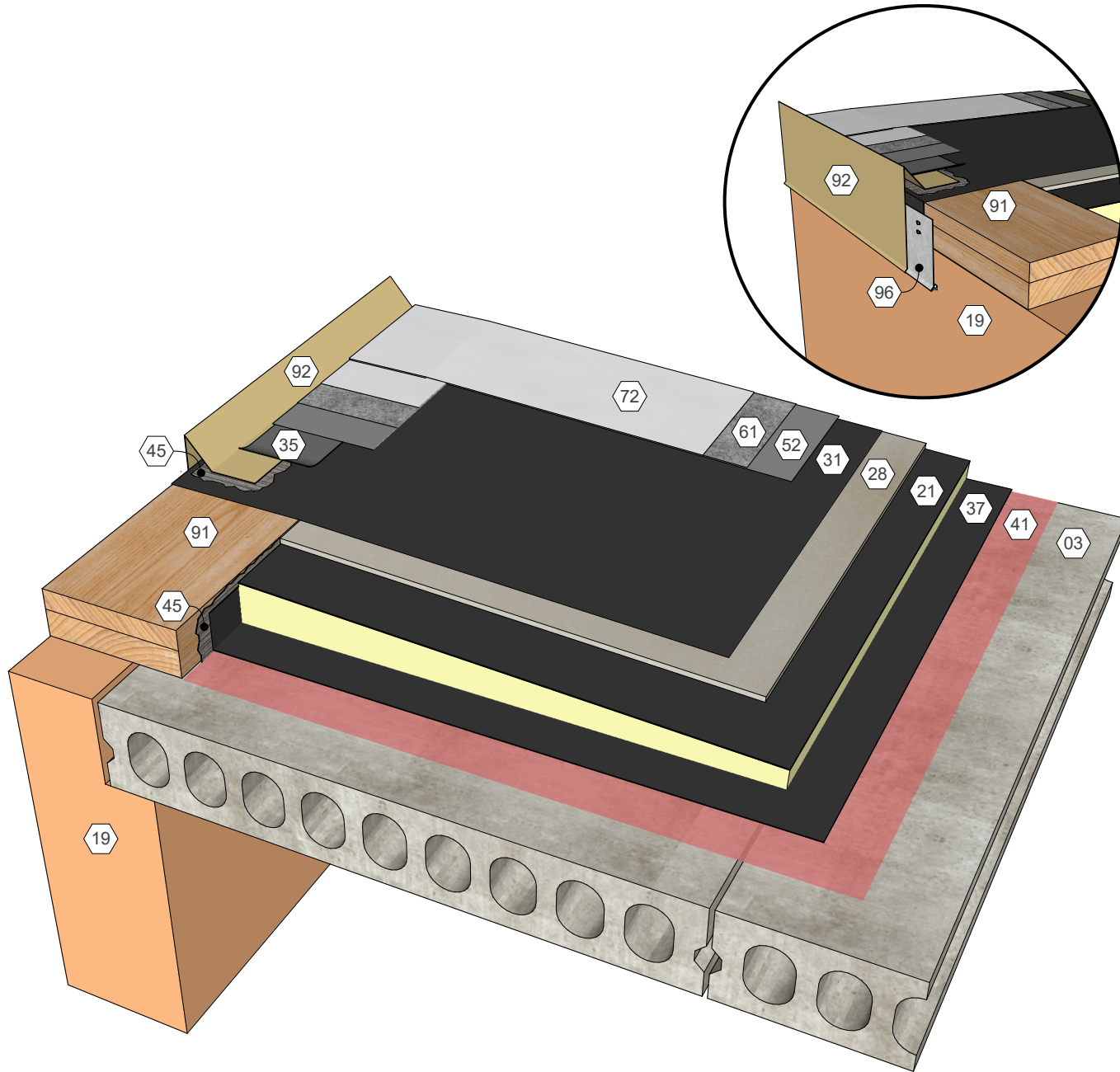
- ①02 Structural Concrete Deck
- ①09 Roof Structure
- ①19 Wall Assembly
- ①21 Polyisocyanurate Insulation (Adhered)
- ①28 Cover Board (Adhered)
- ①31 Approved Base Ply Sheet
- ①35 Stripping Ply
- ①37 Approved Base Sheet (Adhered)
- ①41 Approved Primer
- ①45 Roofing Mastic
- ①52 AlphaGuard BIO Base Coat
- ①61 AlphaGuard Glass Mat or Permafab
- ①72 AlphaGuard BIO Top Coat
- ①91 Wood Blocking
- ①92 Gravel Stop Edge



AlphaGuard® BIO Plus Gravel Stop Edge, Temp. Roof, Structural Concrete Deck
Detail 33032

KEY NOTES

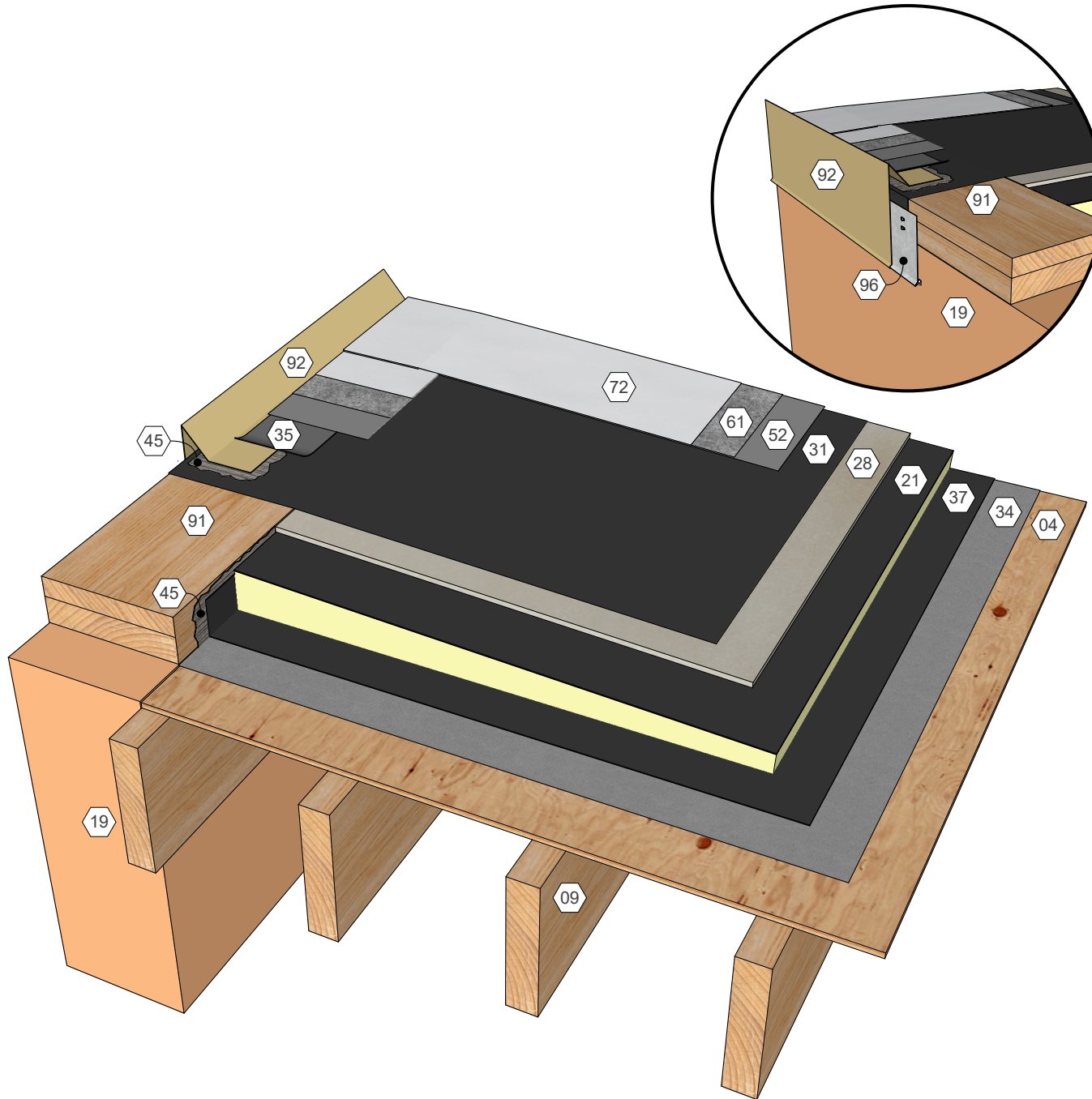
- 03 Precast Concrete Deck
- 19 Wall Assembly
- 21 Polyisocyanurate Insulation (Adhered)
- 28 Cover Board (Adhered)
- 31 Approved Base Ply Sheet
- 35 Stripping Ply
- 37 Approved Base Sheet (Adhered)
- 41 Approved Primer
- 45 Roofing Mastic
- 52 AlphaGuard BIO Base Coat
- 61 AlphaGuard Glass Mat or Permafab
- 72 AlphaGuard BIO Top Coat
- 91 Wood Blocking
- 92 Gravel Stop Edge



AlphaGuard® BIO Plus Gravel Stop Edge, Temp. Roof, Precast Concrete Deck
Detail 33033

KEY NOTES

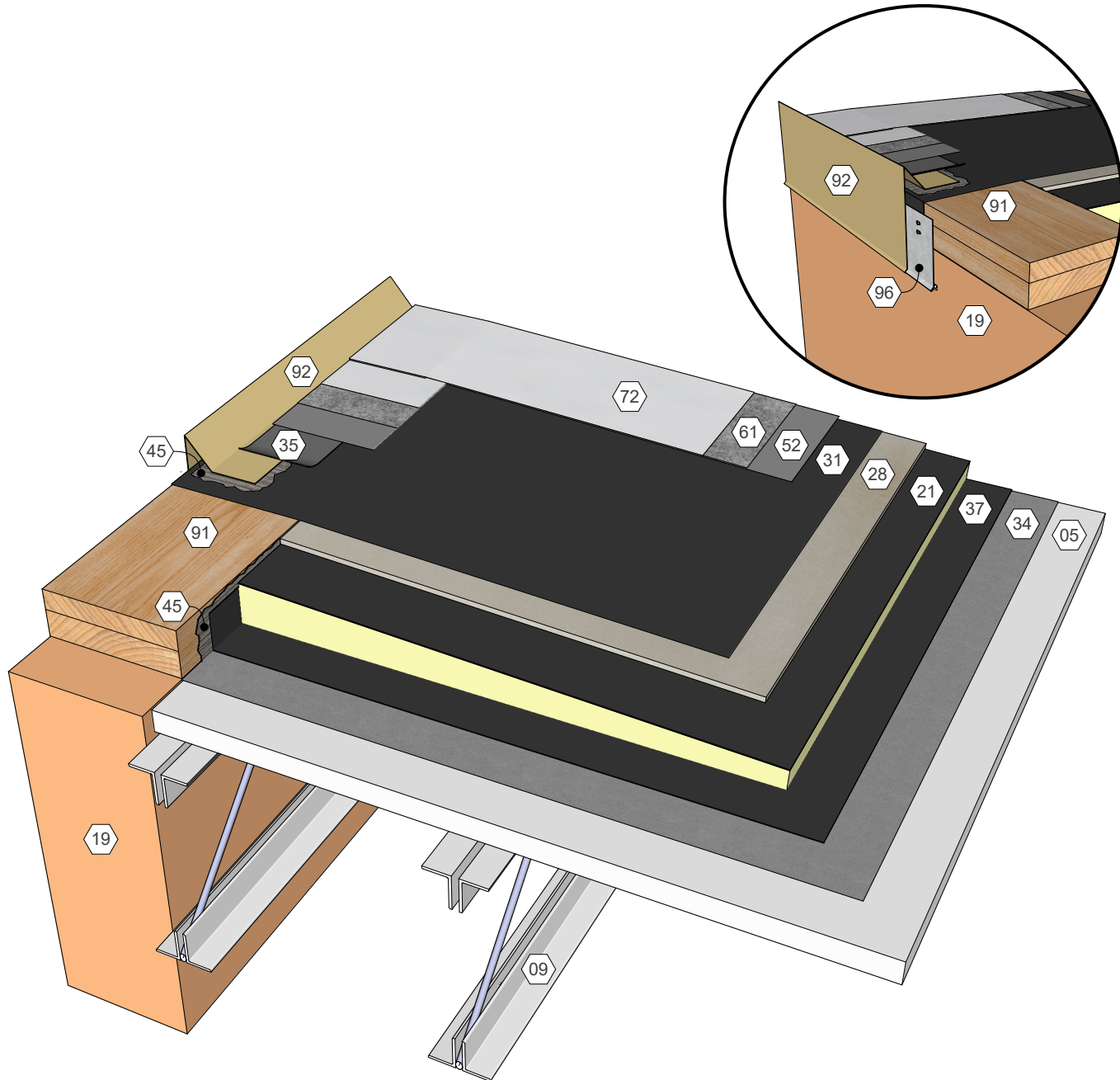
- 04 Wood Deck
- 09 Roof Structure
- 19 Wall Assembly
- 21 Polyisocyanurate Insulation (Adhered)
- 28 Cover Board (Adhered)
- 31 Approved Base Ply Sheet
- 34 Base Sheet (Fastened)
- 35 Stripping Ply
- 37 Approved Base Sheet (Adhered)
- 45 Roofing Mastic
- 52 AlphaGuard BIO Base Coat
- 61 AlphaGuard Glass Mat or Permafab
- 72 AlphaGuard BIO Top Coat
- 91 Wood Blocking
- 92 Gravel Stop Edge



AlphaGuard® BIO Plus Gravel Stop Edge, Temp. Roof, Wood Deck
Detail 33034

KEY NOTES

- 05 Gypsum Deck
- 09 Roof Structure
- 19 Wall Assembly
- 21 Polyisocyanurate Insulation (Adhered)
- 28 Cover Board (Adhered)
- 31 Approved Base Ply Sheet
- 34 Base Sheet (Fastened)
- 35 Stripping Ply
- 37 Approved Base Sheet (Adhered)
- 45 Roofing Mastic
- 52 AlphaGuard BIO Base Coat
- 61 AlphaGuard Glass Mat or Permafab
- 72 AlphaGuard BIO Top Coat
- 91 Wood Blocking
- 92 Gravel Stop Edge



AlphaGuard® BIO Plus Gravel Stop Edge, Temp. Roof, Gypsum Deck
Detail 33035